

outdoor solutions



6 — 9

about us

10 — 23

bioclimatic pergolas

Santorini PG160P

Mykonos PG120P

Ithaca PG115P

24 — 37

fixed pergolas

Creta

Corfu

Kos

Naxos

Angled

38 — 43

carports

Carport

44 — 47

shading systems

ZIP Screen

48 — 53

canopies

Glass Canopy

Aluminium Canopy

54 — 65

fences & gates

FC80

FC80 Pivot Barcode

FC60



Explore all of our outdoor
solutions at glm-outdoor.com

outdoor solutions





GLM OUTDOOR SOLUTIONS is the authorized manufacturer of the advanced shading systems (pergolas & fabrics) and fences of ALUMIL, the leading Greek company in the design and production of architectural aluminium systems. GLM has developed and continuously enriches a wide range of holistic and reliable solutions for every type of outdoor space, with composition and full customization possibilities.

Combining top quality with technological innovation and high aesthetics, GLM offers unique products that enhance and upgrade the outdoor environment, promoting a different way of life inspired by the values of natural light and outdoor living freedom and rooted in the principles of sustainability.



about us

Values

GLM's values serve as its guiding compass, shaping how the company develops products and navigates relationships with customers, employees, society, and other stakeholders.

Vision

GLM envisions fostering and disseminating a distinctive culture of living - one where the internal and external seamlessly coexist. In this vision, humans engage harmoniously with their surroundings, experiencing comfort, freedom, and respect. This ethos aims to elevate the quality of daily life.

Mission

GLM's mission is to create unique outdoor living experiences through innovative products of top quality, technology and aesthetics.

Experience Outdoor Living

Immerse yourself in the essence of outdoor living. Create contemporary, cosy, and secure outdoor spaces that shield you from the elements, enabling year-round enjoyment of the outdoors. "Experience Outdoor Living" isn't just a mantra; it's the core philosophy embedded in every facet of GLM's product lines.



Environmental awareness

GLM's profiles supplied by ALUMIL are made of recycled aluminium, and the shading systems are designed to make the most of the weather, ensuring ideal living conditions. Fully aware of the serious environmental problems facing the planet, GLM promotes a more sustainable lifestyle and fosters in its people a culture of responsibility towards the environment.



Innovation

With a focus on people's needs and on the improvement of their quality of life, GLM redefines the concept of outdoor space, reimagines the culture of outdoor living in modern cities and designs innovative systems that transform everyday life into a unique experience.



Integrity

Integrity is a priority for GLM and every decision made is based on strict moral principles, ensuring that they are implemented both by GLM's people and by individuals or organizations associated with and/or collaborating with the company.



Team spirit

A key principle of GLM is that a group of disparate people can be transformed into a close-knit and strong team capable of meeting even the highest demands. Team spirit dominates the way the company operates, the way it works with others, the way it cooperates with others, and the way it faces new challenges.



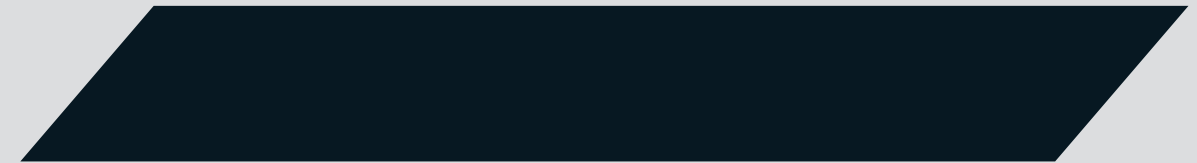
bioclimatic pergolas

Dedicated to creating contemporary and inviting outdoor spaces that provide effective protection against all weather conditions, GLM introduces a collection of bioclimatic pergolas.

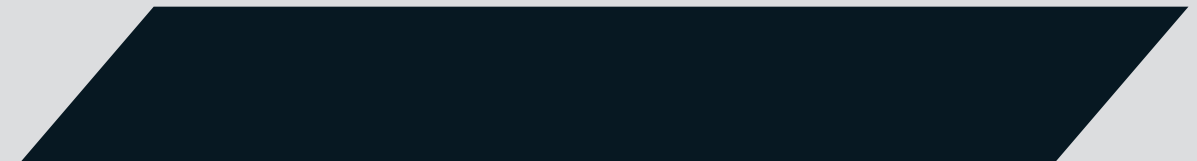
These innovative structures feature fully automated mobile louvers, offering a distinctive year-round living experience. Ideal for various settings, including free-standing, wall-mounted, hotels, restaurants, homes, gardens, patios, terraces, and any outdoor space imaginable.

At the heart of GLM's design ethos are advanced technology, elevated aesthetics, top quality, unwavering reliability, and extensive customisation options with an array of limitless colour choices. These core elements embody the essence of the company's philosophy, seamlessly reflected across all three models of bioclimatic pergolas.

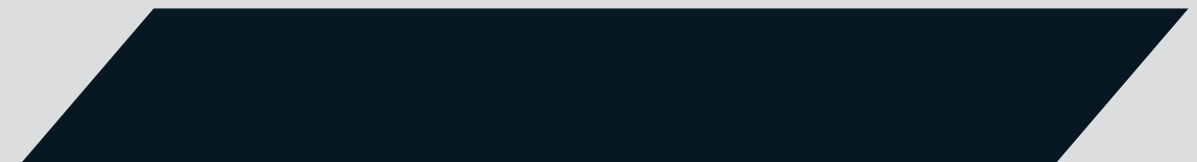
Santorini - PG160P



Mykonos - PG120P



Ithaca - PG115P



bioclimatic pergolas

Discover the bioclimatic logic.

Thanks to the bioclimatic logic, additional utility elements can be integrated into the pergolas, which extend the interior space to the outside, offering even more freedom and comfort in everyday living all year round.

- Vertical rolling fabric screens or sliding aluminium shutters for additional shading.
- Glass sliding system to create bright, temperature-controlled spaces.
- LED lighting applied on transoms and louvers for atmospheric and stylish lighting at night.
- Heating devices (infra-red).
- Sound systems.
- Sensors for wind, rain, sun.
- Certified systems from the ift Rosenheim Institute.

Top design.

A harmonious combination of high aesthetics and functionality, with clean lines, invisible fixing points and a totally concealed motor. GLM's bioclimatic pergolas are the definition of high-tech minimalism and quality of life enhancement.

Noiseless rotation mechanism.

Totally concealed patented rotation system built into one of the louvers, which offers flawless and silent operation.

Sturdiness and very large dimensions.

Thanks to their impressive robustness, GLM's bioclimatic pergolas cover very large areas, up to 50m² with only four columns, and can withstand very strong winds and high snowfall up to 300Kg/m² (under certain conditions).



bioclimatic pergolas

Solutions with posts.

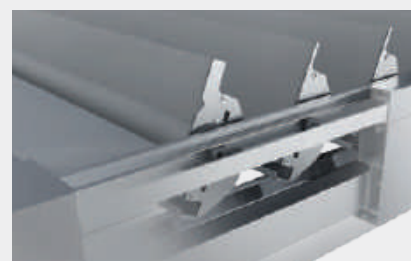
High levels of watertightness and leakage avoidance.



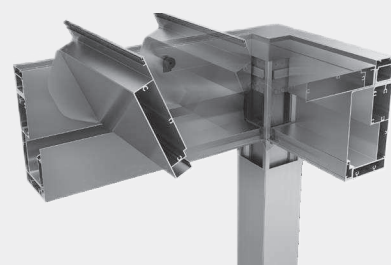
Effective water drainage system, from top to bottom via the posts, using special rubber components and gutter profiles of large dimensions.



Innovative rotation mechanism, placed inside the louver, with flawless and long-lasting operation.



The modular connection of mullion with transom profiles contributes to the robustness and ease of construction.



louvers position and effect

Great variety of solutions.

GLM's systems offer multiple construction options that cover every need and complexity.

- Free-standing and wall-mounted construction.
- Single, double, corner, multiple and complicated structures.
- Structures with additional elements such as sliding and shading screens.
- Sliding shutter with louver or fabric.

Integrated water sealing and drainage system.

A design innovation that offers protection against heavy rainfall.

- Efficient sealing along the entire water path, from louvers to ground.
- Protection against possible overflow in the event of heavy rainfall, thanks to the wide gutters and the other profile sections through which the water passes.
- Minimal use of silicone, which guarantees a longer service life.

Ease and speed of installation.

Thanks to their special design, with modular profiles and hook-type accessories, the bioclimatic pergolas can be installed quickly and easily.

SANTORINI is a bioclimatic pergola of top sturdiness, ideal for very large structures up to 7.2x7.2m, which makes it truly unique. In the case of residential buildings, part of a 50m² courtyard can be transformed into a separate space with controlled shading and ventilation, improving the quality of life. In the case of hotels, restaurants and commercial premises, multiple structures can effectively cover very large areas with fewer mullions, allowing a large number of tables to be placed.

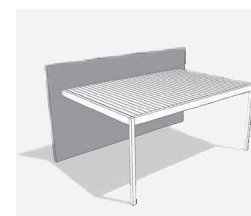
Santorini^{PG160P}

the charm of luxury

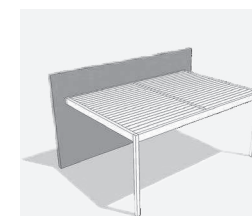
- Effective protection from sun, rain, snow and other weather conditions.
- Special water sealing system from the louvers to the base of the post, which incorporates an effective water drainage system to protect against overflow due to heavy rainfall.
- Controlled conditions thanks to the adoption of bioclimatic logic and the incorporation of additional elements such as sliding glass and shutter systems, vertical shading screens (ZIP), LED lighting, etc.
- Impressive sturdiness allowing very large dimensions, up to 7.2x7.2m with only four posts.
- State-of-the-art components, such as the invisible patented silent rotation mechanism and automation systems.
- High aesthetics and minimal design with attention to detail.
- Wide range of solutions and possibilities for customization and extension to meet every need.



single wall-mounted



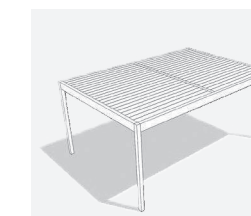
single wall-mounted with intermediate transom



single free-standing



single free-standing with intermediate transom



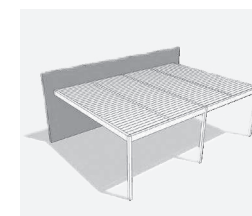
multiple free-standing



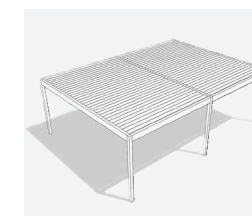
multiple free-standing with intermediate transoms



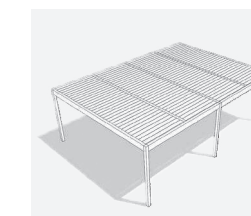
multiple wall-mounted with intermediate transoms



multiple free-standing



multiple free-standing with intermediate transoms



embedded



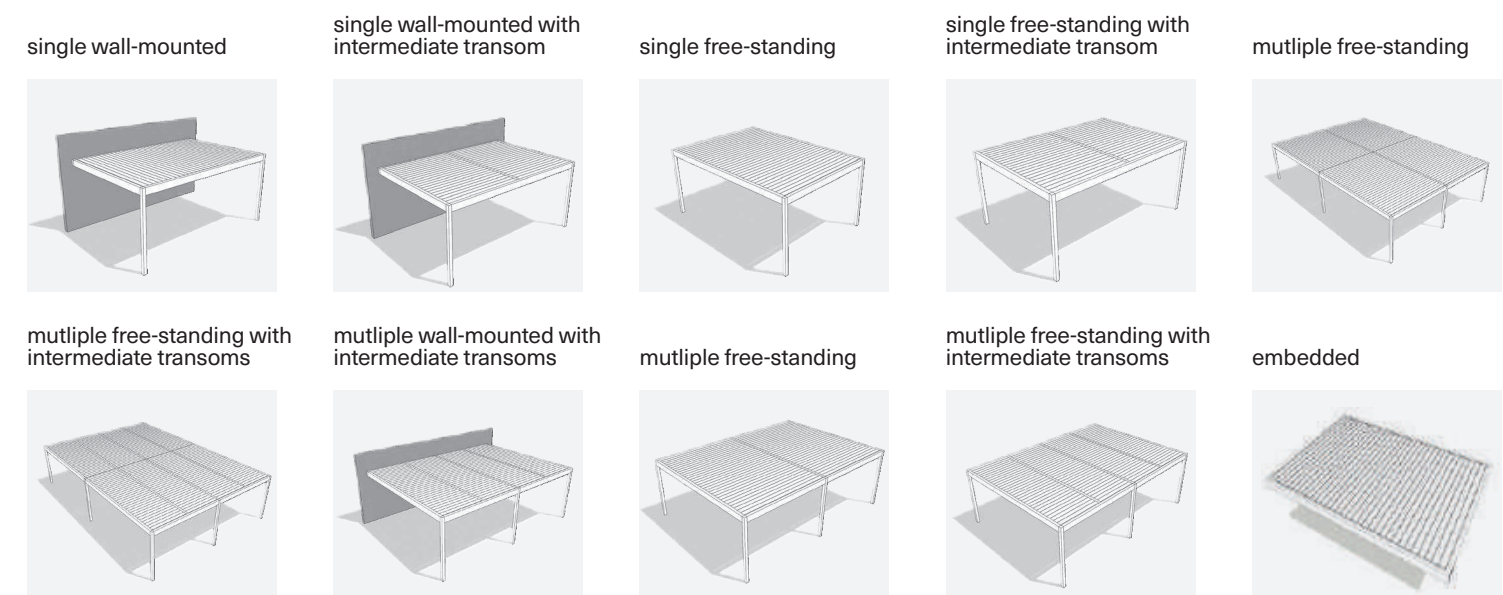
MYKONOS is more than just a classic pergola option for controlled shading and effective protection against rain, snow and other weather conditions. In addition to its functionality, it is characterized by its absolutely minimal aesthetics and top sturdiness, enabling elegant and large structures up to 6.5x4.5m or 6.2x4.2m in the free-standing version.

Mykonos

PG120P

an oasis of comfort and well-being

- Concealed and silent mechanism that ensures smooth operation of the system.
- Special water sealing system from the louvers to the base of the posts, which incorporates an effective water drainage system to protect against overflow due to heavy rainfall.
- Controlled conditions thanks to the adoption of bioclimatic logic and the incorporation of additional elements such as sliding glass and shutter systems, vertical shading rolling screens (ZIP), LED lighting, etc.
- State-of-the-art components such as the invisible patented silent rotation mechanism and automation systems.
- Wide range of solutions and possibilities for customization and extension to meet every need.



An ideal solution for outdoor areas in need of small or medium pergolas, ITHACA is easy to install thanks to its modular design as well as its lightweight construction, combining minimal aesthetics with effective shading and protection against severe weather conditions.

Ithaca

PG115P

essence through simplicity

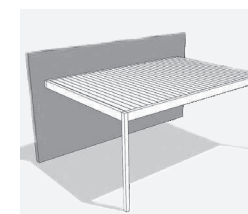
- Minimal design and high aesthetics with straight lines, flat surfaces and almost invisible fixing points.
- Top sturdiness allowing single structures of relatively large dimensions without wind resistance problems (3.0m high by 4.0m wide & 5.0m projection, 20 sqm).
- High levels of water sealing and an effective drainage system that directs, through the posts, rainwater to the ground.
- Innovative rotation system, offering a nearly silent and smooth long-term operation.



single free-standing



single wall-mounted



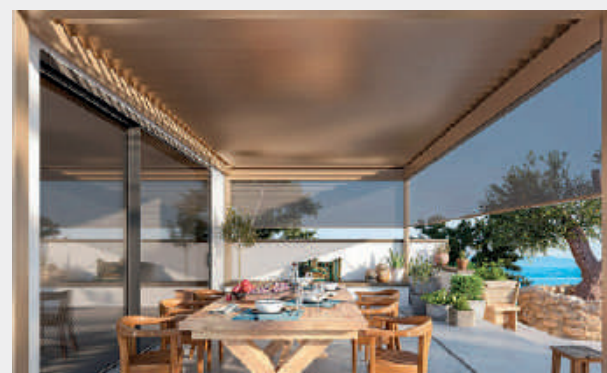
extra equipment

Enhance the versatility of bioclimatic pergolas with cutting-edge automation, custom LED lighting, and innovative glass and shading systems like ZIP screens or shutters. These additional elements seamlessly integrate into the pergolas, elevating functionality and ensuring a comfortable living experience day and night.

Automation.

The following automation can be integrated into the bioclimatic pergolas, which are controlled via remote control or smartphone:

- Shading programming with automatic adjustment of slats during the day.
- Special sensor which closes the slats immediately in case of sudden rain or snow.
- Wind sensors to avoid damage in very strong wind conditions.
- Sound system with Bluetooth technology.
- Heaters mounted on the transoms.
- LED stripes on the louvers, controlled by the same remote control.



LED Lighting.

Dispelling the "myth" that pergolas are only used during the day, the integration of LED stripes allows you to create an atmospheric environment and enjoy unique moments of relaxation during the evening hours. You can choose between visible or concealed lighting, adjustable or not, on the louvers, around the transoms, or, in the case of MYKONOS, on the columns, extending the pergola's user experience and ensuring an elegant effect.

Glass System.

The perimeter cover of the pergola with a glass sliding system upgrades it aesthetically, creating the perfect protection from the wind without minimizing natural light. The glass systems incorporated into the pergolas are of top robustness and reliability, with high wind resistance and ensure stable conditions in the surrounding area. The following options are available:

- With a four guide rails system to provide solutions with 4-sashes and 8-sash (meeting stile)
- With a five guide rails system to provide solutions with 5-sashes and 10-sash (meeting stile)
- With a ZIP screen integrated at the same side to provide extra shading

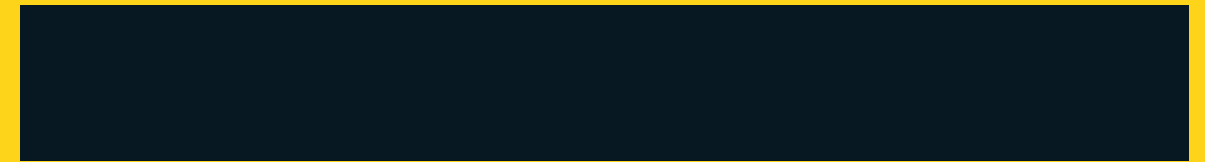
ZIP screen shading system.

Thanks to the advanced ZIP technology, the shading system is particularly durable, acts as additional shading around the perimeter of the pergola, offers effective protection on rainy days and allows large dimensions of up to 6 m. Specially designed and almost invisible, the system parts do not affect the overall minimal aesthetics. The rolling ZIP screen can be combined with a fly-screen for effective protection against insects, but also with a glass sliding system on the same side, further expanding the possibilities for personalizing the pergola.

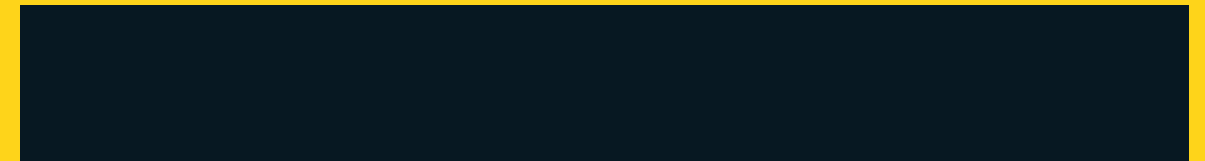
fixed pergolas

Explore GLM's extensive collection of fixed pergolas, featuring five distinctive models – CRETA, CORFU, KOS, NAXOS, and Angled – designed to complement both modern and traditional aesthetics. All pergolas provide highly effective shading but also elevate outdoor spaces, catering to diverse aesthetic preferences.

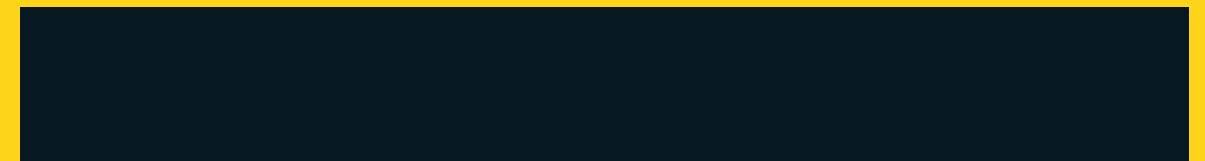
Creta



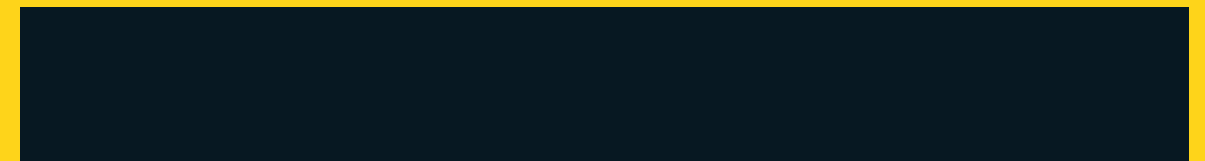
Corfu



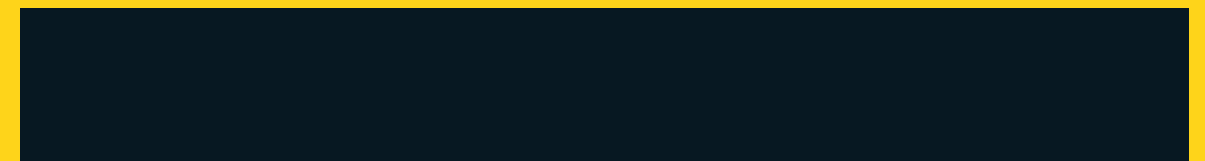
Kos



Naxos



Angled



Distinguished by their unparalleled robustness and effortless installation, GLM's fixed pergolas are perfectly suited for a variety of settings, ranging from residential exteriors to the refined ambiance of hotels, bars, restaurants, and recreational areas.

- Minimal aesthetics with clean design lines and concealed fixation points.
- Top robustness and impressive wind resistance, allowing for large dimensions (up to 6x4m for Creta).
- Excellent durability without corrosion problems in coastal areas.
- Unrivalled easy and quick installation, with lightweight elements and a simple assembly process.
- Possibility of customization by applying and combining additional elements such as aluminium blinds, polycarbonate or glass panels, shading fabrics, natural or synthetic wood, reeds, etc.
- Numerous colour options.



CRETA stands as the foundational offering within our fixed pergolas series, boasting aesthetics that are unparalleled and robustness that excels under high wind loads. Designed to minimise sway, even with the addition of shading or rain protection elements like fabrics and panels, CRETA ensures durability and stability. With the majority of the construction completed at GLM's factory, on-site installation is quick and easy.

Creta

the epitome of minimal aesthetics

- Special design with hook-type connectors for fast and easy installation of both the framework and the louvers, which can be mounted like framed panels.
- Possibility of various complex constructions (corner, multiple etc.).
- Selection between various aluminium louvers (i.e. 20x115mm, 35x130mm).
- Possibility of applying additional elements such as shading fabrics, wood composite louvers or vertical shutters for an unparalleled aesthetic result.
- Maximum pergola dimension 6x4m.



CORFU makes a distinctive statement with its modern and imposing design, a departure from the traditional wooden structures. As an alternative concept in fixed pergolas, it not only provides efficient shading but also elevates the aesthetics of the surrounding space, offering a contemporary and stylish solution.

Corfu

an exceptional modern proposal

- Use of 120mm post without visible fixation points.
- Special hook-type connectors for robustly connecting transoms with mullions.
- Possibility of applying additional elements such as aluminium or wood composite louvers, shading fabrics etc.
- Maximum pergola dimension 4,8x6m.



The KOS model goes beyond providing effective shading - it offers reliable rain protection utilising overlapping aluminium louvers. This unique design creates a sealed roof with ample ventilation and natural lighting, ensuring a well-ventilated and illuminated space. Rainwater is efficiently guided to the ground through strategically placed posts, combining functionality with thoughtful design.

Kos

elegance & effective rain protection

- Effective shading and protection from rain.
- Integrated natural ventilation and drainage system.
- LED lighting.
- Top robustness allowing for large constructions (6x 2.6m).
- Modular design that facilitates placement on the project site.
- Possibility of combination with the fixed pergola CRETA and the rotating bioclimatic MYKONOS.
- Possibility of extending the projection with 6 posts (11.8x2.6m).

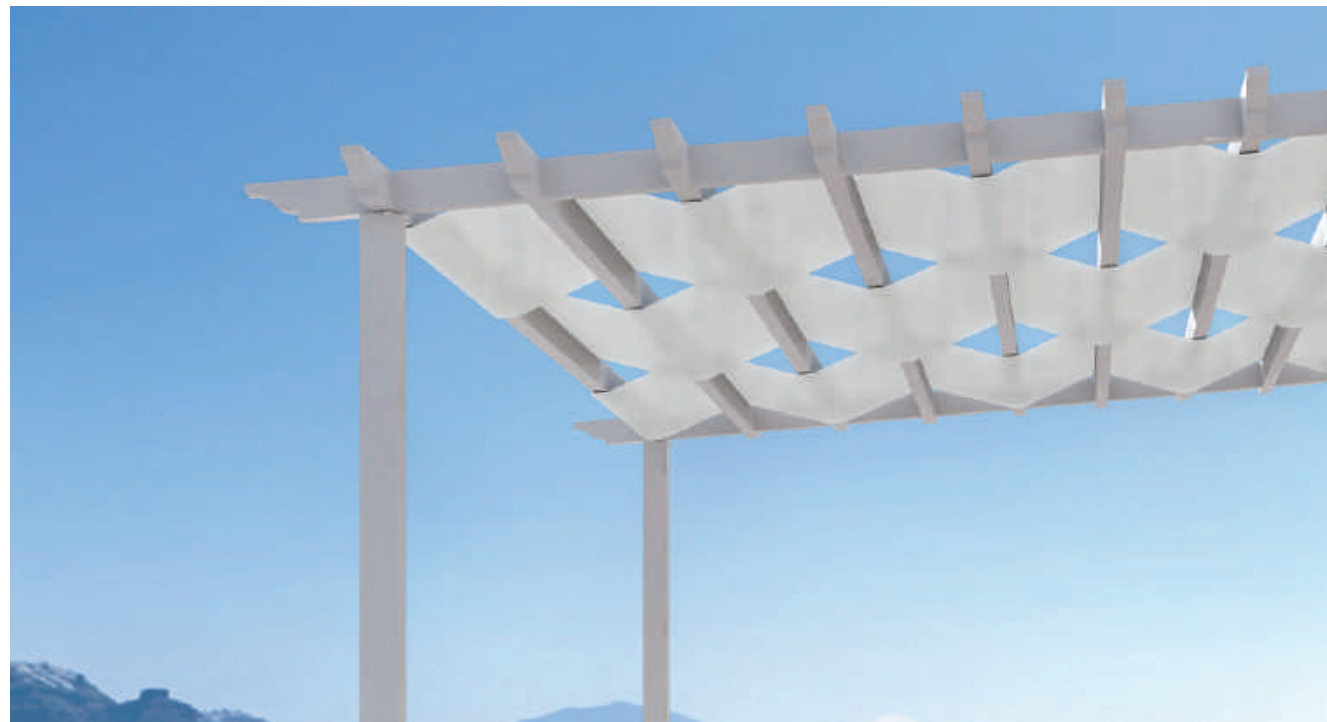


Drawing inspiration from Cycladic architecture, NAXOS presents fixed pergolas characterised by top quality and enduring durability. Infused with the charm of traditional design and the timeless aesthetics of wood, NAXOS redefines tradition itself, making it the perfect choice for contemporary residences or hotels seeking a blend of modern functionality and island-inspired allure.

Naxos

traditional design with timeless value

- Effective shading.
- Top sturdiness that allows for large 5x5m constructions.
- Modular design that facilitates placement on the project site.



Breaking the norms of conventional pergolas, the CRETA PG120F introduces a groundbreaking innovation – angling its well-structured design to create distinctive triangular or trapezoid configurations. This feature expands the horizons of outdoor living, offering a new dimension in architectural creativity. With special fittings that securely bind the transoms together at the desired angle, the angled CRETA option blends elegance with versatility, enabling unprecedented design possibilities.

Angled

angles of innovation

- Angled constructions with firmly bound transom profiles (> 45°).
- Minimal design with clean lines and concealed connection points.
- Extreme durability and sturdiness, ensuring longevity and reliability.
- Wide range of aluminium & Woodalux® louvers, adding both functionality and style.



carports

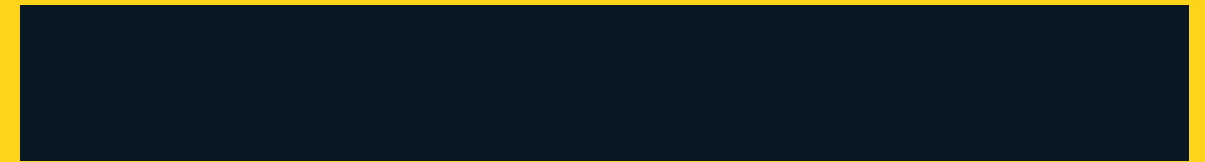
Discover GLM's aluminium carports, a sleek alternative to traditional garages.

These robust pergola structures seamlessly blend elegance with functionality, providing reliable vehicle protection and enhancing your property's aesthetic appeal.

Choose from single or double typologies with customisable additions such as LED lighting and fabric ceiling. With minimal maintenance and efficient drainage systems, GLM's carports redefine stylish and durable vehicle shelters, adding both value and charm to your property.

Elevate your outdoor experience further by exploring our carports with integrated photovoltaic roofs, transforming these structures into eco-friendly solutions that offer vehicle protection while harnessing solar energy.

Carport



GLM's aluminium carport is a sustainable and robust solution that adheres to strict construction criteria, designed for durability and efficiency. It accommodates the integration of PV cells, meeting high snow load standards. This maintenance-free alternative to traditional garages is a smart investment, adding value and revenue to your property while providing a stylish and practical shelter for your vehicle.

Introducing a fusion of cutting-edge design and functionality, the standard version boasts integrated photovoltaic panels with customizable roof components like plain aluminium panels or polycarbonate sheets. Available in both single and double options, the carport can be further enhanced with features such as LED lighting, fabric ceilings, and vertical parapets.

Carport

driving towards a sustainable future with innovative parking solutions

- Fully sustainable solutions that comply with strict construction standards and regulations
- Very robust constructions enabling the integration of PV Cells, while meeting high snow load standards up to 170 Kg/sqm.
- Maintenance-free and durable alternative to traditional garages, eliminating the need for regular treatment or upkeep.
- A smart investment that adds value and revenue to your property, offering a stylish and practical shelter for your vehicle.
- Available in single and double typologies, for one or two vehicles respectively.
- The standard version includes integrated photovoltaic panels, while alternative roof components such as plain aluminium panels or polycarbonate sheets are also available.
- The construction can be enhanced with LED lighting, aluminium ceiling and vertical parapets.
- Efficient sealing and drainage system as in bioclimatic pergolas.
- Front posts can be adjusted (0.7 - 1.0 m offset) for improved maneuverability.

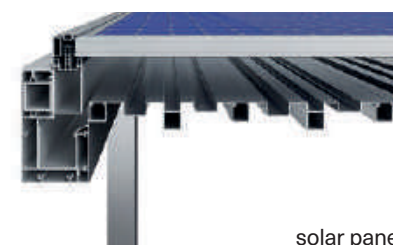
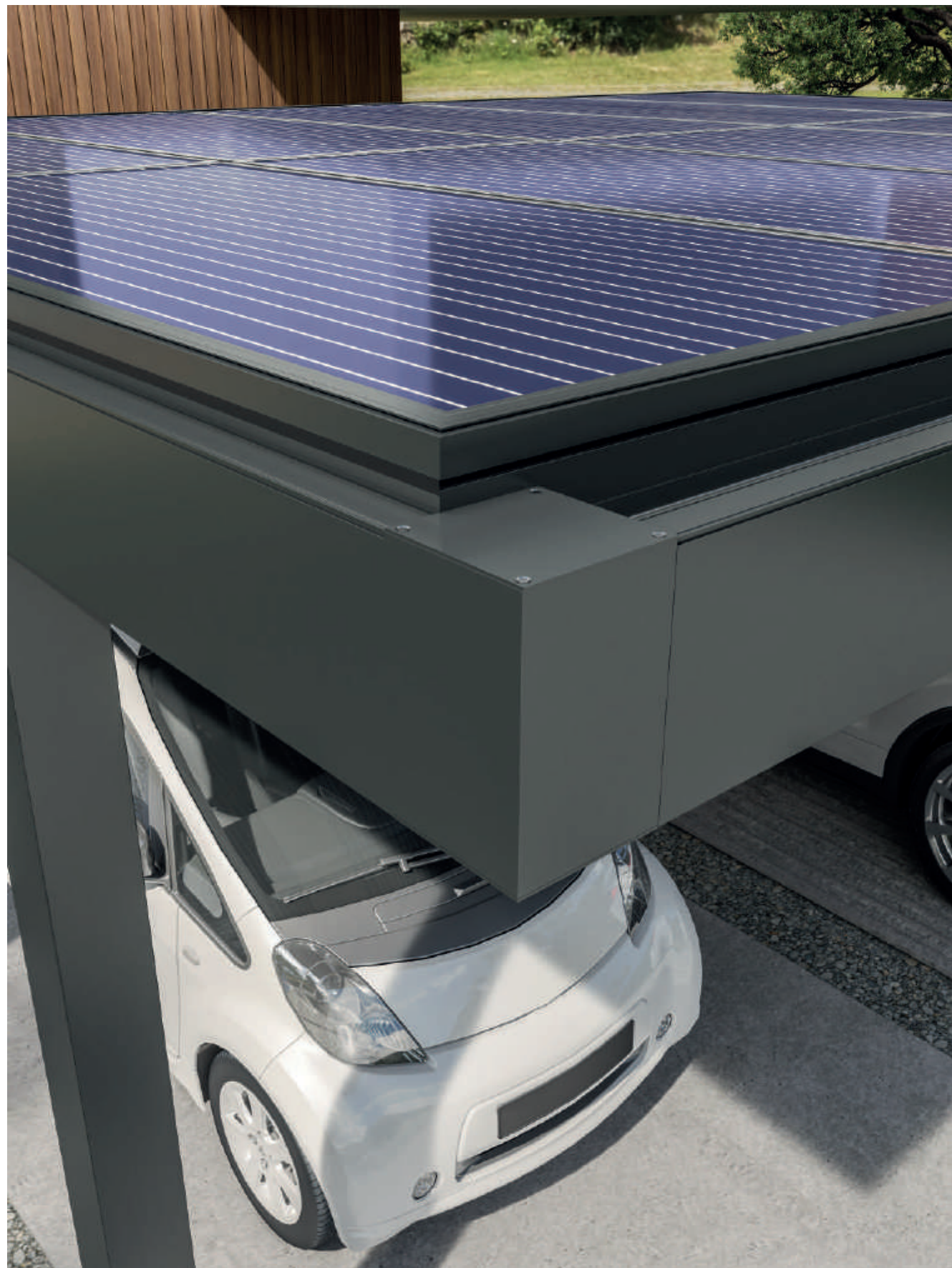


Single carport dimensions:

height
2.7 m

width
3.75 m

length
5.65 m



Double carport dimensions:

height
2.7m

width
5.95 m

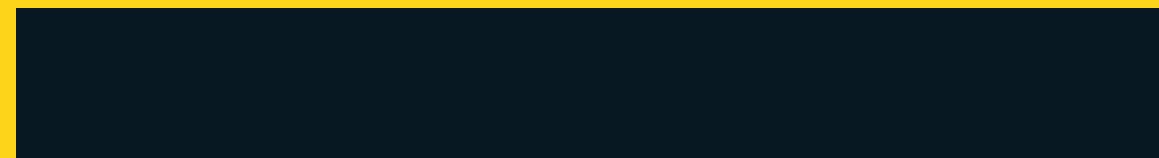
length
5 m



shading systems

Electric fabric roller featuring cutting-edge ZIP technology, designed to provide efficient shading with a touch of elegance.

ZIP Screen



ZIP Screen is a versatile and innovative shading solution, designed to offer precise control over natural light, optimal thermal comfort, and enhanced building aesthetics. With its sleek and modern design, the screen harmonises with any architectural setting, delivering both elegance and functionality. Meticulously manufactured using state-of-the-art components and premium materials, our screens are built to last, ensuring durability and longevity (up to 7.0 m width).

ZIP Screen

seamless blend of style and functionality

- State-of-the-art fabrics that effectively shade and block harmful UV rays.
- It reduces heat gain while allowing visual transparency and breathability.
- It minimises solar heat gain, reducing reliance on artificial cooling for energy savings.
- It brings a touch of elegance and style to any setting, elevating the overall aesthetic appeal.
- Wide range of colours, textures and finishes to seamlessly integrate with any window and facade.
- Crafted with meticulous attention to detail, ensuring exceptional durability and long-lasting performance.
- It provides precise control over light transmission for desired privacy levels and darkening of internal space.
- It can be connected with various smart apps and enables automated control for personalised shading and lighting settings.



The shading fabrics utilized in our ZIP Screens offer exceptional features and advantages, guaranteeing optimal performance and customer contentment. They are meticulously chosen to cater to the diverse requirements of shading systems, providing a perfect equilibrium between functionality and aesthetics.

- High UV resistance
- Mechanical durability and dimensional stability
- Blocking of up to 97% of heat
- Up to 28% natural light transmission
- Tested and classified for fire resistance
- Safe for use (e.g. REACH compliant)
- High colour resistance over time
- Wide range of colours and textures
- Smooth finish and easy clean

canopies

Elevate your spaces with GLM's innovative canopies that seamlessly blend functionality and aesthetics - from robust glass canopies exuding minimalist elegance to aluminium shading canopies, a perfect fusion of enduring strength and captivating beauty. Explore effective rain protection, easy installation, and a variety of options designed to enhance entrances, storefronts, and high-rise building windows.

Glass



Aluminium



The Glass canopy is a minimal glass canopy system designed for robust applications, gracefully adorning entrances, storefronts, and more with large glass panels.

Offering three distinct base solutions, it marries practical rain protection with an aesthetic enhancement for the surrounding space.

Glass canopy

elegance amidst rain

- Effective rain protection and uninterrupted natural light.
- Minimalist aesthetics thanks to the self-supporting canopy design (no frame, struts).
- Easy installation and robust construction, fortified for large dimensions with a projection capability of up to 1.5 meters.
- Three different bases catering to various projections and glass thicknesses.



Base	Glass thickness	Maximum projection	Maximum length
G10	8+8mm	1.4 m	2.5m
	10+10mm	1.5 m	2.5m



G8	8+8mm	1.2 m	2.5m
----	-------	-------	------



G6	6+6mm	0.8 m	2.5m
	8+8mm	1 m	2.5m

Aluminium shading canopies are easily installed and firmly fixed without struts, all thanks to their innovative, subtle supporting system. A pair of robust aluminium bars, effortlessly fixed to the wall, provides a sturdy foundation for the easy insertion of pre-made shading frames. With a maximum projection of 1.8m (or 2.0 x 1.8 m panel), these canopies harmonise durable aluminium with the exquisite beauty of Woodalux® louvers, ensuring both enduring strength and captivating aesthetics.

Aluminum canopy

seamlessly elegant, easily installed

- Strut-free fixation through revolutionary, subtle supporting system.
- Easy installation with a sliding placement of a pre-made shading panel.
- Multiple components allowing for a maximum dimension of 2 x 1.8 m each.
- Ideal for shading windows of high-rise buildings.
- Wide array of aluminium and Woodalux® louvers.



fences & gates

GLM offers two minimal fences & gates systems, with louvers either placed in-between mullions (FC80) or attached to them (FC60), with clear lines and concealed fixing points.

FC80



FC60



FC80 Pivot Barcode

Robust and reliable, the fencing systems are maintenance-free, ideal for modern residential or hotel facilities and available in standard or customized solutions, with a variety of designs to suit every architectural need.

- A wide variety of design patterns and unlimited possibilities for personalization.
- Top robustness without problems of damage to the structure from wind load and strong weather conditions.
- Possibility of large dimensions, especially for gates, to allow for easy pass-through of vehicles (up to 6m.)
- Unparalleled aesthetics, design with attention to detail, 100% aluminium constructions.
- Innovation with new styles, modern materials and smart combinations for unique constructions.



An advanced and multiform fencing system that offers a multitude of technical solutions and applications and is a valuable tool for every project and need. The main system's features are the inlaid installation of the infills between the posts and the vast range of decorative materials applied. In addition, the system stands out for its incomparable sturdiness, with reinforced profiles and heavy-duty components to allow for greater distance between columns, construction of privacy fencing and larger gate dimensions.



fence/single leaf/fence



fence/single leaf/double leaf/fence



fence/single leaf/double leaf/fence

FC80

define your outdoor space through unique decoration

- Top robustness for very large structures, especially for gates, to ensure comfortable passage of vehicles (up to 6m.)
- Ability to construct “blind” surfaces without problems with wind load (over 2m high).
- Wide range of proposed solutions and great scope for customization, thanks to the variety of profiles and technical solutions.
- Innovation and differentiation through the use of innovative materials, smart frames, lighting options, oversizing etc.
- Replacement of concrete structures (mullions, shading) with aluminium profiles.



Use of pivot hinges and posts 120mm or 250mm, for large gates panels and 100% aluminum result (without concrete posts).



Multiple LED lighting options along the louvers, posts, handrails, handle, etc.



Sliding gate is available as an alternative to the hinged gate (with one or two leaves), offering top reliability and full automation.



Variety of decorative post caps (pyramid, triangle or flat style) available in long-lasting colors.



The gate features a unique "barcode" design at both sides, that is guaranteed to make an impact and catch the eye. At the same time, the concealed pivot hinges provide stunning appearance, while ensuring smooth operation.

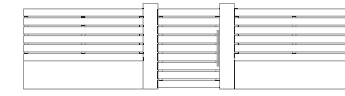
FC80 Pivot Barcode

an exceptional aluminium gate most appropriate for villas and modern residences

In addition to its unique aesthetics, the gate may include integrated LED lights and Woodalux bars, creating a harmonious contrast with the sleek aluminium. Its dimensions (up to 1.5m width / 3.0m height) make it ideal for grand entrances and the high-quality construction ensures it will withstand the test of time. This new product is an outstanding choice for homeowners searching for a stylish and functional gate for their property



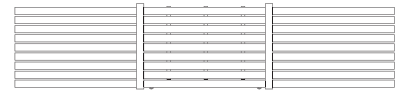
A complete aluminium fencing system with the selected louvers attached to the mullions. It offers a continuous linear design effect, complements the aesthetics of the surrounding areas and is highly recommended for hotels and residences. The system is characterized by high robustness, allowing for large construction dimensions, and offers all gate options, single, double-leaf hinged and sliding).



fence/single leaf/fence



fence/double leaf/single leaf/fence

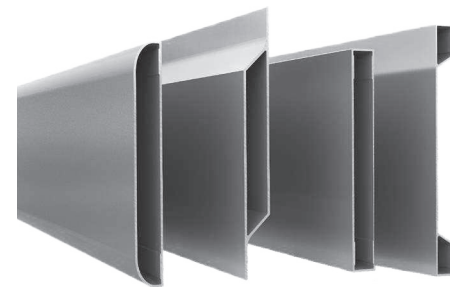
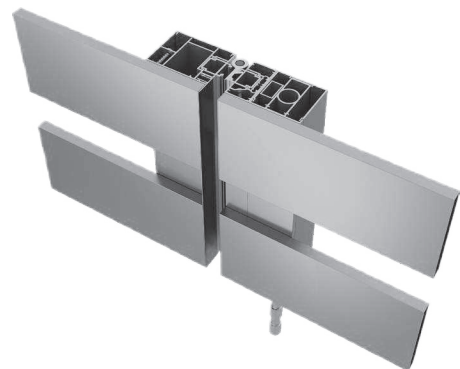


fence/sliding gate/fence

FC60

a highly aesthetic fencing system

- Top design with a simple, linear aesthetic, without visible fixing points.
- Wide range of solutions and design proposals, especially in aluminium louvers.
- Unique combinations with composite wood materials, such as WOODALUX hybrid louvers.
- Top robustness and possibility for very large constructions.
- Special design for ease of construction.



color index

Combine pre-anodizing with the unlimited powder coating colors offered, creating architectural solutions of unparalleled beauty, incomparable quality and long-lasting durability.



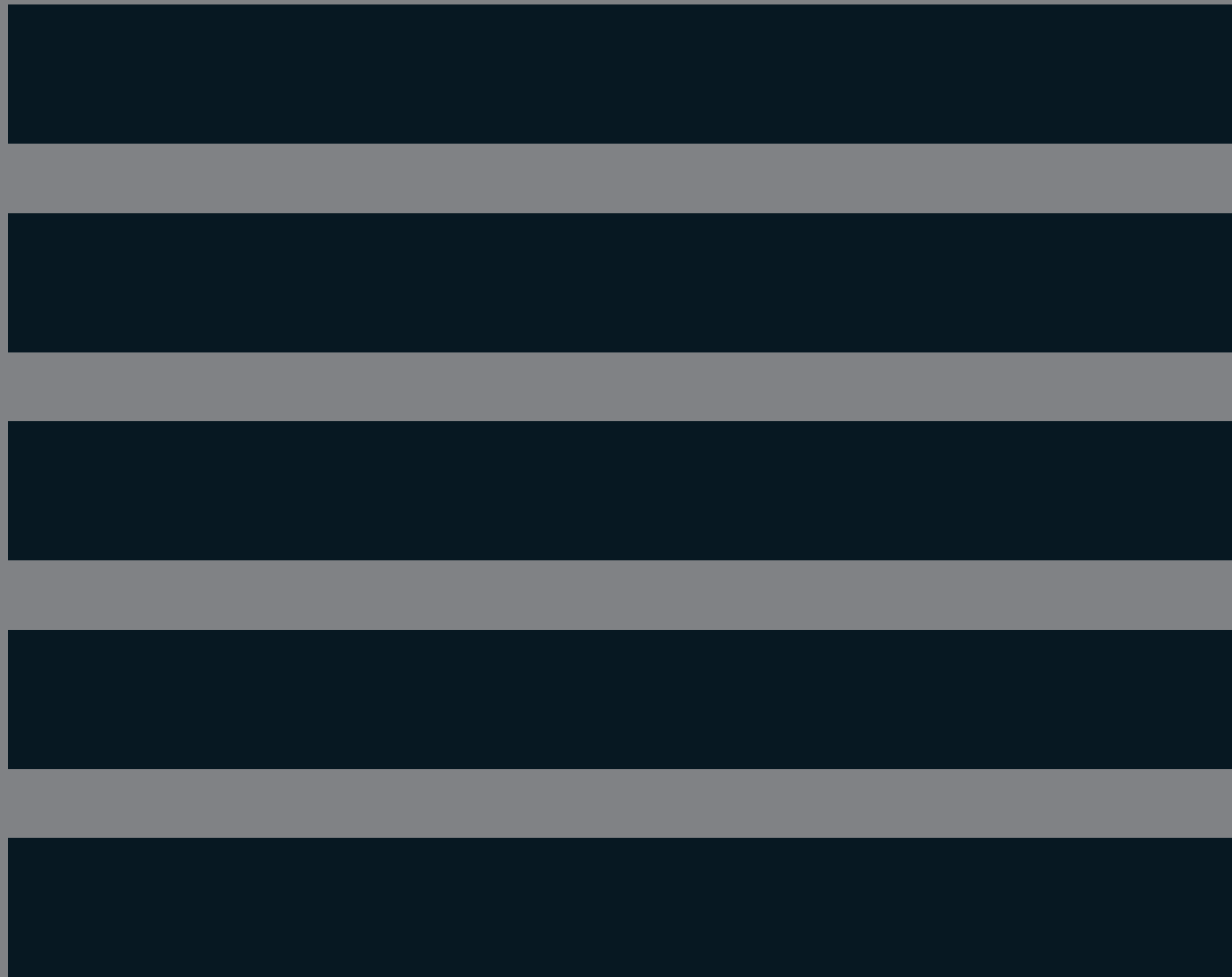
Color Index of super durable powder coating.

Usually, pergolas are placed in coastal areas and next to swimming pools, where salt and chlorine cause erosion. By combining Seaside Class powder coating with the special pre-anodizing surface treatment procedure, GLM is able to effectively prevent the occurrence of "filiform" corrosion.

super durable powder coating

		
RAL 9016 STRUCTURA YA316F	RAL 7016 STRUCTURA YL316F	RAL 7006 STRUCTURA D2525 - YL306F
		
RAL 7022 MATT D2525 - YL280F	RAL 1019 STRUCTURA D2525 - YD319F	815 Mesogeios Crete
		
RAL 8014 STRUCTURA D2525 - YM314F	RAL 9005 STRUCTURA D2525 - YN305F	RAL 7039 STRUCTURA D2525 - YL339F
		
RAL 7012 STRUCTURA D2525 - YL312F	RAL 6005 STRUCTURA D2525 - YK305F	RAL 7037 STRUCTURA D2525 - YL337F
		
RAL 1013 STRUCTURA D2525 - YD313F		





HEADQUARTERS & FACTORY

Kilkis Industrial Area , Block 11
PO box 19, Kilkis PC 61100

T: +30 23410 71100
E: pergolas@glmhellas.com



Explore all of our outdoor
solutions at glm-outdoor.com



@glmoutdoor



GLM Outdoor Solutions



GLM Outdoor Solutions



