

carports



[GLM-OUTDOOR.COM](http://GLM-OUTDOOR.COM)

## single carport

height  
2657mm

width  
3763mm

length  
4767mm

Aluminium carports have gained immense popularity as a versatile alternative to permanent garages. Combining practicality with elegance, these robust pergola structures provide reliable vehicle protection. Their sleek, modern design enhances your property's aesthetic appeal while offering many benefits that surpass traditional garages. Elegant minimalist design with concealed fixation points, enhancing the ambient aesthetics.

- Fully sustainable solutions that comply with strict construction standards and regulations.
- Very robust constructions enabling the integration of PV Cells, while meeting high snow load standards up to 200 Kg/sqm.
- Maintenance-free and durable alternative to traditional garages, eliminating the need for regular treatment or upkeep.
- A smart investment that adds value and revenue to your property, offering a stylish and practical shelter for your vehicle.



the elegant choice  
for your vehicle protection





## double carport

height  
2732mm

width  
5953mm

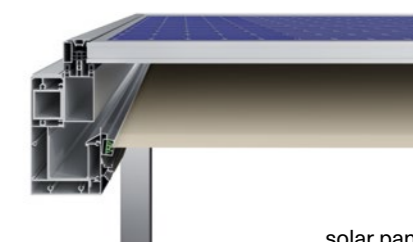
length  
4977mm

By integrating a photovoltaic roof, these carports become eco-friendly solutions that provide vehicle protection while harnessing solar energy.

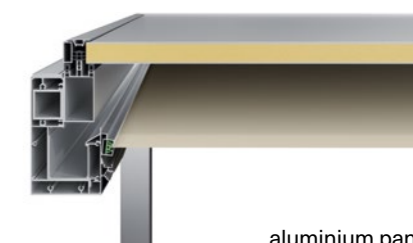
The customizable add-on design ensures they meet your specific requirements, while the additional equipment enhances their functionality. With their sleek and durable aluminium construction, these carports combine style and longevity.

## driving towards a sustainable future with innovative parking solutions

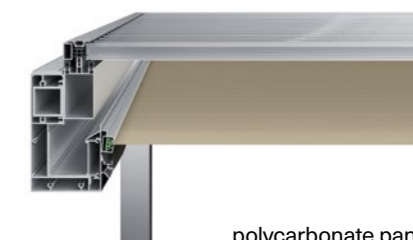
- Available in single and double typologies, for one or two vehicles respectively.
- The standard version includes integrated photovoltaic panels, while alternative roof components such as plain aluminium panels or polycarbonate sheets are also available.
- The construction can be enhanced with LED lighting, fabric ceiling and vertical parapets.
- Efficient sealing and drainage system as in bioclimatic pergolas.
- Front posts can be adjusted (up to 1.0m offset) for improved maneuverability.



solar panel



aluminium panel



polycarbonate panel



HEADQUARTERS & FACTORY

Kilkis Industrial Area , Block 11  
PO box 19, Kilkis PC 61100

T: +30 23410 71100  
E: pergolas@glmhellas.com



Explore all of our outdoor solutions at [glm-outdoor.com](http://glm-outdoor.com)

