

Robust and reliable, the fencing systems are maintenance free, ideal for modern residential or hotel environments and available in standard or bespoke options, with a variety of designs to suit any architectural requirement.



- A wide variety of design patterns and unlimited customization.
- Superior robustness to resist damage caused by wind and severe weather.
- Ability to accommodate large dimensions, especially on the gate, allowing, thus, vehicles to pass through with ease (up to 6m).
- Unrivaled aesthetics, detail-oriented design, 100% aluminum construction.
- Innovate new styles, modern materials and smart creations for unique constructions.



HEADQUARTERS & FACTORY

Kilkis Industrial Area , Block 11
PO box 19, Kilkis PC 61100

T: +30 23410 71100
E: pergolas@glmhellas.com



Discover all outdoor systems at glm-outdoor.com



fencing systems



GLM-OUTDOOR.COM

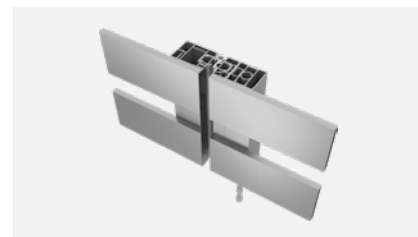


GLM offers three minimalist fencing systems in which the blinds are mounted either sliding between the posts (FC80) or against the posts (FC60), or vertically on a specially designed aluminum rail, with clean lines and hidden connection points.

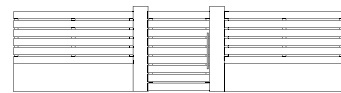


A complete aluminum fencing system with the chosen blinds mounted against the posts. With a continuous linear look, it blends in with the surroundings and is particularly suitable for hotels and residential buildings. The system is robust and can accommodate very large structures and is available in single, double and sliding gate versions.

Bring out the best in your space by using the aesthetics of aluminum as the main axis.



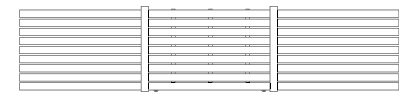
- Top design with a simple, linear aesthetic with no visible connection points.
- Wide range of solutions to choose from, especially for aluminum blinds.
- Unique combinations with synthetic wood materials, such as WOODALUX hybrid blinds.
- Maximum robustness and suitability for large constructions.
- Ease of construction thanks to special design.



fence/single-leaf fence/fence



fence/double-leaf/single-leaf/fence



fence/sliding fence/fence

A wide variety of design patterns and unlimited customization.

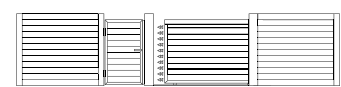


A valuable tool for any project or need, an integrated and versatile fencing system that can be used in a variety of applications. The main features of the system are the sliding insertion of the individual elements between the posts and the use of a range of different decorative materials.

Additionally, the system stands out for its unparalleled robustness, with reinforced profiles and heavy-duty components allowing for greater distance between posts, privacy fencing and larger gate dimensions.



fence/single-leaf fence/fence



fence/double-leaf/single-leaf/fence



fence/sliding fence/fence

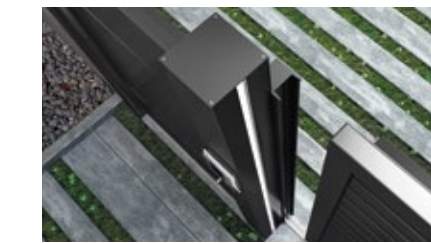
- Maximum robustness for very large constructions, especially on the gate, allowing thus, vehicles to pass through with ease (up to 6m).
- Ability to build privacy fencing without having to worry about wind pressure (over 2m height).
- Wide range of solutions and customization possibilities thanks to the variety of profiles and technical solutions.
- Innovation and differentiation by using innovative materials, special frame inlays, lights, oversize features, etc.
- Replacement of prefabricated concrete elements (posts, roofing) using aluminum profiles.



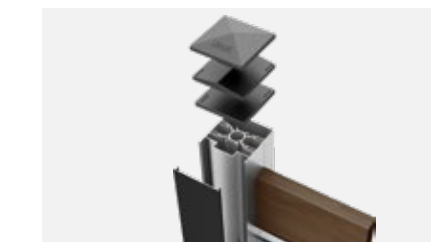
Use of axial pivots and 120mm or 250mm aluminum posts, for large gates and 100% aluminum aesthetics (without cement posts).



Lighting possibilities with LED strips along the blinds, posts, handle, etc.



As an alternative to the opening gate (with one and two leaves), a sliding gate is available, offering superior reliability and full automation.



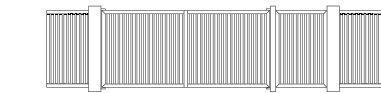
Variety of decorative post caps (pyramid, triangular, flat) in matching shades of high durability.

This is a system characterized by the simple aesthetics of vertical lines. At the same time, it successfully replaces the equivalent iron structures, but with none of the paint, rust and maintenance problems that accompany them.

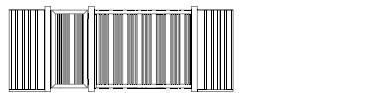
Unique solution in absolutely minimal lines.



- It offers a special aesthetic, which is not typical in aluminum fences.
- The aesthetic effect really skyrockets when using WOODALUX profiles.
- It perfectly replaces the corresponding iron structures.
- It can be used to cover large areas without having to worry about wind.
- A clever and effective way of connecting the top of the bars, which is invisible and allows high constructions.



fence/double-leaf/single-leaf/fence



fence/single-leaf/double-leaf/fence